



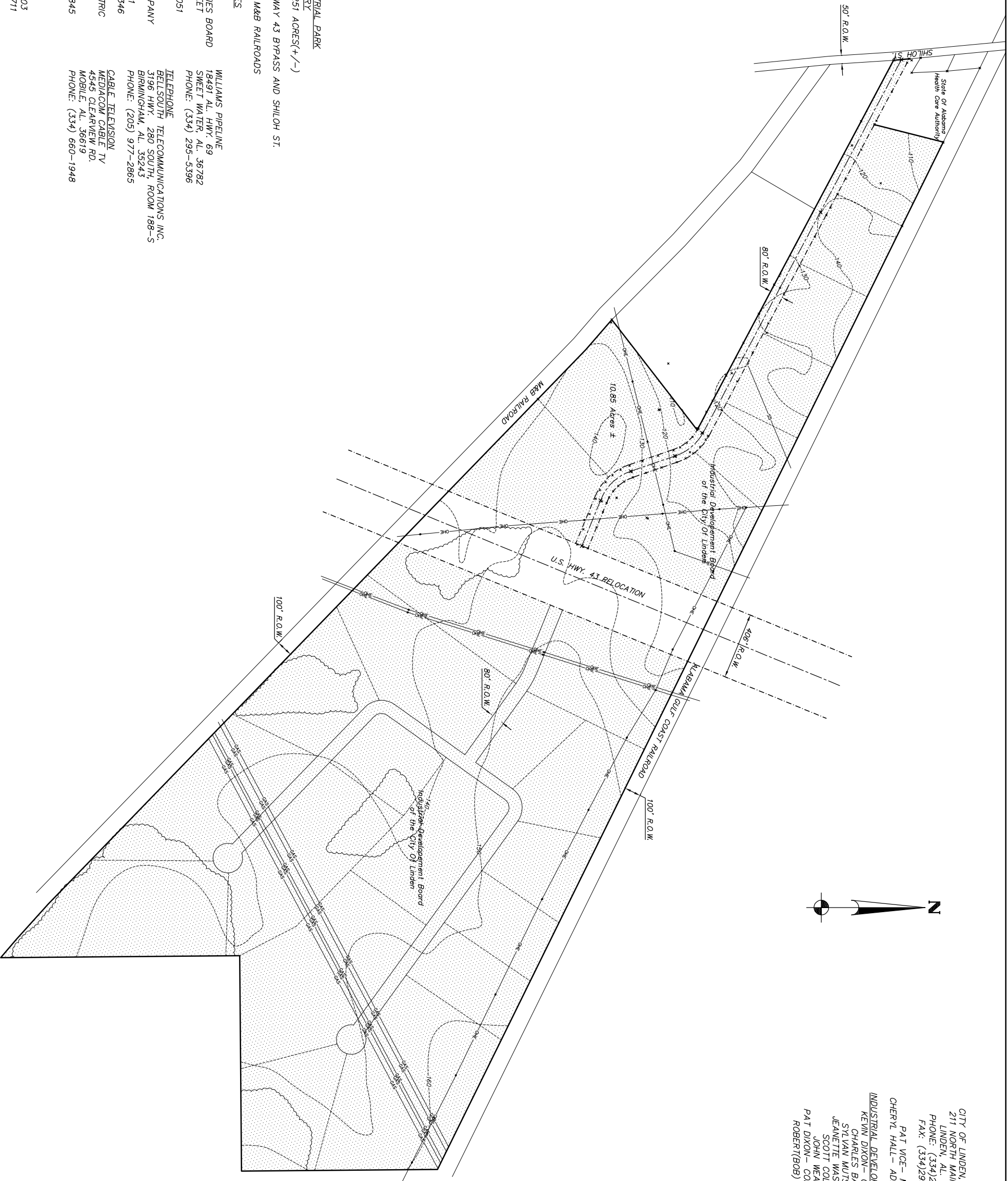
**Goodwyn Mills
Cawood & Inc.**

**ENGINEERING
LANDSCAPE ARCHITECTURE
PLANNING**

1251 Highway 644, P.O. Box 3605
Montgomery, Alabama 36109
Phone: (334) 271-3300
Fax: (334) 272-1548
1102 South 28th Street
Birmingham, Alabama 35205
Phone: (205) 879-4482
Fax: (205) 879-4483

CITY OF LINDEN, ALABAMA
211 NORTH MAIN STREET
LINDEN, AL. 36748
PHONE: (334)295-5051
FAX: (334)295-0224

PAT VICE - MAYOR
CHERYL HALL - ADMINISTRATOR
INDUSTRIAL DEVELOPMENT BOARD
KEVIN DIXON - CHAIRMAN
CHARLES BALLAS
STEVAN WUTSCHLER
JEANETTE WASHINGTON
SCOTT COLLIER
JOHN WEAVER
PAT DIXON - CONSULTANT
ROBERT(BOB) DRURY



**LINDEN SOUTH INDUSTRIAL PARK
FACT SUMMARY**

DEVELOPABLE AREA-251 ACRES(+/-)
ACCESS TO U.S. HIGHWAY 43 BYPASS AND SHILOH ST.
ACCESS TO AGR AND M&B RAILROADS

UTILITIES

WATER AND SEWER
CITY OF LINDEN UTILITIES BOARD
211 NORTH MAIN STREET
LINDEN, AL. 36748
PHONE: (334) 295-5051

POWER
ALABAMA POWER COMPANY
P.O. BOX 2641
BIRMINGHAM, AL. 35291
PHONE: (205) 527-4346

BLOCK WARRIOR ELECTRIC
DEMOPOLIS, AL. 36732
PHONE: (334) 289-0845

GAS
ALAGASCO
210 16TH AVE.
BIRMINGHAM, AL. 35203
PHONE: (205) 326-2711

WILLIAMS PIPELINE
18491 AL. HWY. 69
SWEET WATER, AL. 36782
PHONE: (334) 295-5396

TELEPHONE
TELECOMMUNICATIONS INC.
3196 HWY. 280 SOUTH, ROOM 188-S
BIRMINGHAM, AL. 35243
PHONE: (205) 977-2865

CABLE TELEVISION
MEDIAGOM CABLE TV
4545 CLEARVIEW RD.
MOBILE, AL. 36619
PHONE: (334) 660-1948

**LINDEN
INDUSTRIAL
PARK**
CITY OF LINDEN
ALABAMA

Scale: 1"=600'

Issue date	
Preliminary	
Final	
Engineer: EAS	
Drawn by: JPP	

**OVERALL
MAP**